

## Service bulletin T10-019a

**This Service Bulletin cancels and replaces the SB T10-019 issued on April 19<sup>th</sup>, 2010**

	Information only
	Product Update - Warranty
	Product Update – Non Warranty
✓	Action required

**Date**

June 2010

**Recipients**

Manitowoc Crane Care Network

**Subject**

Check of batch number of K mast spigot castings

**Model(s) concerned**

All K mast type K637, K639 and K839 with variations  
R,M or T.

### 1 – Subject of the information

To instruct all Manitowoc Crane Care Network to inform customers to find and quarantine different batches of spigot castings.



**Usage of a mast equipped with a spigot from below listed batches can lead to a mast connection failure under extreme stress conditions.**

## 2 – Instruction

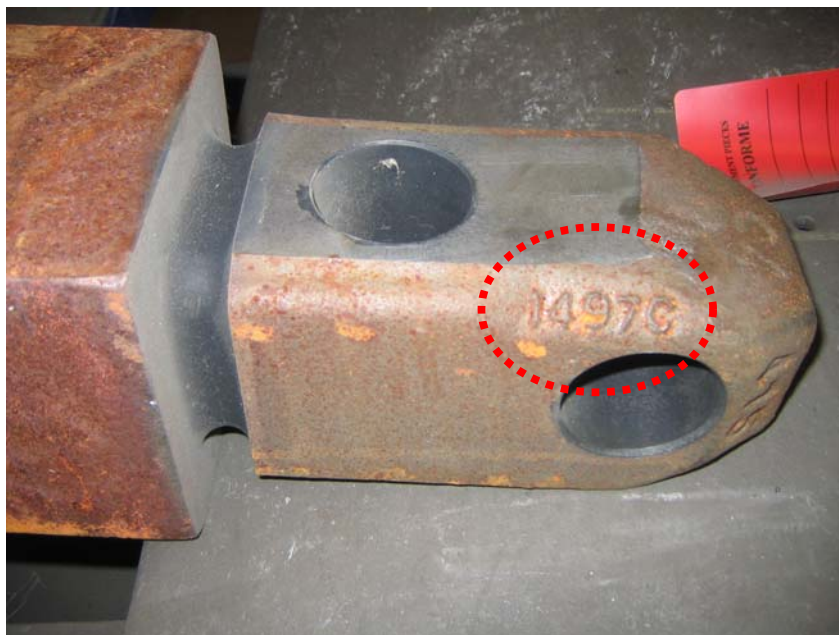
Manitowoc has discovered a potential deviation in the characteristics of the spigots used early 2007 to make the connection between K masts type K637, K639 and K839 including all R,M and T variation.

**Manitowoc hereby instructs all tower crane users to check the batch number of the four spigot castings of all K637, K639 and K839 masts, including R, M and T variations shipped in 2007.**

The check has to be performed before the next erection of the mast.

## 3 – How to check ?

Spigot casting batches are marked directly on the spigot by the manufacturer, as described in the below picture for the batches that have to be checked.



Batches to be reported to Manitowoc have markings :

**345 6 B or 349 6 M or 349 6 N or 349 6 X**

**024 7 K or 025 7 A or 025 7 X or 025 7 Z**

## **4 – What to do if a spigot casting from one of the researched batches is found ?**

Do not use the mast.

Contact immediately your Manitowoc Crane Care usual contact or directly the Contact Center of Décines for further information.

Contact :     Manitowoc Crane Group France  
                  Centre de Contacts de Décines  
                  Les Pivolles  
                  5, rue de Catalogne  
                  69153 Décines Charpieu Cedex  
                  France

**Tel : + 33 (0)4 72 18 79 39**

**Email :     [emeagme-service@manitowoc.com](mailto:emeagme-service@manitowoc.com)**